

DATA SHEET
sqlXtract



Cloud SQL Data Access for Oracle Cloud ERP & HCM



KEY BENEFITS

- Enterprise wide
- SaaS Priced
- SQL for ERP & HCM
- Easy to Implement.
- Cloud solution for cloud applications
- Select only access to your data
- No client software install
- Detail table/view schema browser. With primary/Foreign Key information

About sqlXtract

Allows users to connect to Fusion Cloud ERP Application to execute ad-hoc queries against database using SQL.

Built on the Cloud using Oracle APEX, a modern architecture, sqlXtract is fast, secure and built on Oracle technologies for use with Oracle ERP & HCM.

User Interface Modelled on familiar tools to developers, with the Monaco text editor, offering a seamless experience and an easy fit into the OTBI report development lifecycle. The UI supports different colour themes for different instances.

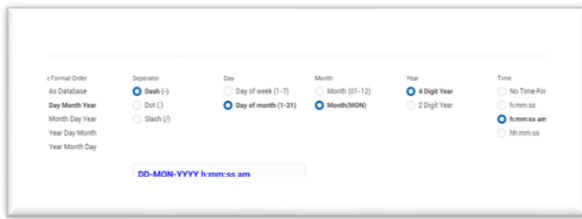
Feature rich with user options to control data presentation, allowing sorting, single record views, exports to MS excel and control over formatting. Options for Date & Time presentation such as DD-MM-YY hh:mm:ss are available to facilitate analysis.

sqlXtract is modelled to be used from anywhere and offers execution history and save functionality so that valuable sql statements can be retained and are available wherever you are and for any environment need to connect to. No Data is stored in the system while saved sql can be inserted into the text editor easily, as the query is refined.

The syntax highlighting & line numbering make the query readable and the availability of themes enables the developer to select what works for them. During sql refinements, the short cuts to execute selected or the code on the current line, are available to add speed to process.

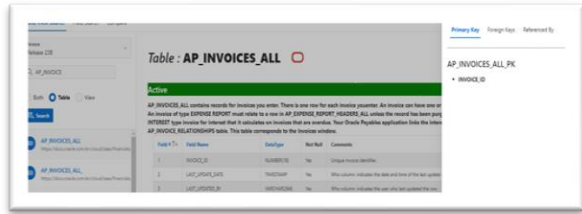
Because sqlXtract is built on the Oracle Apex platform it has a coherent and feature rich UI. All secured under the Apex Security model, supplemented with 2 factor authentication framework.

Incorporating a schema browser offers the developer user to describe the objects to verify field names, review primary/foreign key relationships and easily link to the Oracle



source documentation at the click of a button for the selected database table or view.

The SaaS Fusion version is understood by sqlXtract and changes to tables and views from version to version can be identified. This feature enables a developer to identify issues quickly that are introduced to OTBI reports by the Oracle update, as well as being able to identify all changes to facilitate improvements to existing reports.



Functions

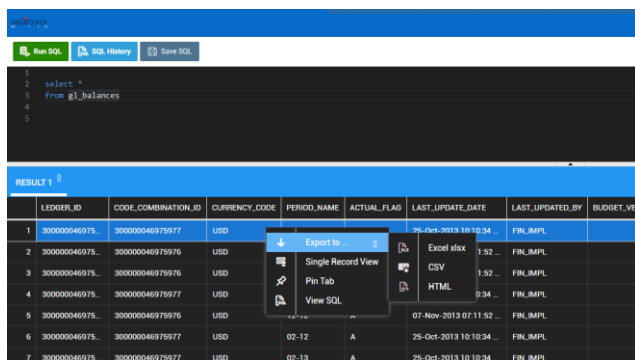
- Execute ad-hoc SQL on the Cloud
- Query Oracle Fusion database
- Store your queries
- Connect multiple Fusion Instances
- View your history
- See results in a tabbed Grid
- Export results to Excel

DESIGNED BY DEVELOPERS

- Oracle Documentation Links
- Export to Excel

Features

- Describe and compare objects between releases
- Linked to Oracle Documentation
- Separates Fusion Versions
- 2 phase authentications
- Tutorial videos
- Familiar IDE – Monaco Editor
- Format Grid – column types, show hide null...



Audiences and Use Cases

- OTBI Report Developers / Verify SQL against DB
- OTBI Report Design / Generate SQL for models
- Migration Specialists / Verify Data in Fusion
- Support Engineers / Query Data Adhoc
- Freelance Consultants / Take Toolkit Anywhere
- Patch Impact Analyst / Review schema differences

Pricing

- SaaS pricing
- Consulting, Enterprise & Single Users licenses
- Competitive Pricing



About Solution250

Solution250 was established to provide development tools and solutions for the Cloud applications space. Why 250? Because our solutions and in particular our flagship sqlXtract tool, was designed to fill a perceived gap in the Oracle Cloud SaaS system. Making it complete, 100%, or 2*50%. Our stylish themed logo's makes for easily identifiable product and harmonious company identity.

Our intention in Solution250 is to offer a range of portable cloud tooling and applications. We are Oracle specialists and our user communities include corporate users as well as independent consultants.

Contact us:

Australia: +61 414 596 330

Send us an email:

mark@cbconsultingwa.com